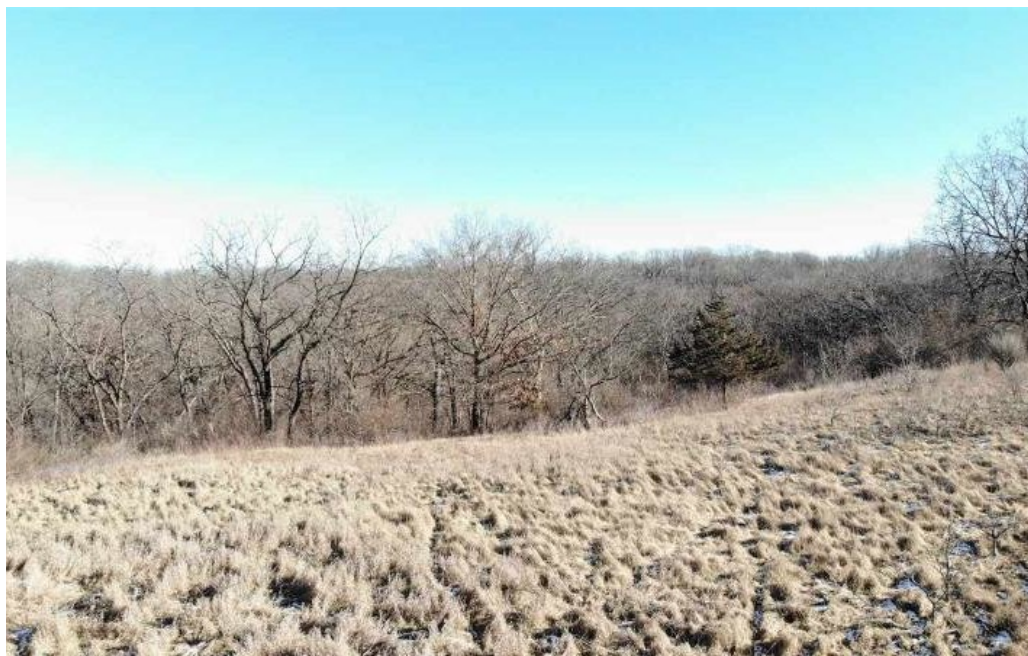


24.46 Ac Evans Quarry Rd
Dodgeville, WI 53533

**RESTAINO
& ASSOCIATES
REALTORS**

Powered by **agents.madison.com**

MLS# 1846669



\$ 232,500

Zoned AR-1 allowing development of multiple lots. Rare opportunity for a builder, investor, developer, or anyone looking to build their dream home(s). Very private 24+ acre parcel consisting of large Hickory & Oak trees. A few pasture acres exist throughout this mostly wooded setting. Enjoy wildlife on this conveniently located paradise just 35 minutes West of Madison with an easy commute on Hwy 18-151. Easement for a driveway in place across neighboring land. Land surveyed June 2017. Land is eligible for 8 (perhaps more) animal unit per town zoning.



Josh & Jac Blasi

PHONE

(608) 888-9296